

A MEDICAL SCHOOL FOR PRINCE EDWARD ISLAND

MAY 2022



UNIVERSITY
of Prince Edward
ISLAND





Why we need more training capacity for physicians

- Nationally, regionally and locally there are challenges with **recruitment and retention of doctors**—especially in rural areas.
- Doctors are **changing how they practice**—prefer to work as a collaborative team
- Newly trained doctors **carry lower patient loads** than older ones—and **patients have higher care needs**

PEI human resource capacity

- There is a **need** and there will be an **increasing need** on PEI for physicians.
- PEI has the talent among our youth to become **exceptional physicians**—many pursue entry but are unsuccessful and give up on the career or train offshore.
- Goal at UPEI is to train 20 per year with a focus on a cross-Island, “tip-to-tip” experience—**train them here/keep them here.**

What kind of Faculty of Medicine does PEI need?

- With PEI's population and medical community capacity,
the emphasis has to be on generalism.
- The ideal mix is **50:50 family doctors and general specialists.**

Why UPEI? UPEI Programs

- UPEI has a **proven track record** in collaborative and interdisciplinary health and health-related programming that benefits PEI communities.



Partnership is the way to go

- It would take UPEI more than five years to develop a Faculty of Medicine on its own, and a partnership with an award-winning school such as Memorial University gives us **immediate access to a curriculum** and **50 years of experience in generalist training and rural medicine.**

Memorial Faculty of Medicine

- **Award-winning** accredited Faculty of Medicine.
- **Exceptional track record** focused on rural education and experiences—has resulted in increasing physicians practicing in rural family medicine, which **aligns with PEI vision and needs.**
- In 2022, Memorial Medicine was awarded—**for the ninth time in the past 20 years**—the Society of Rural Physicians of Canada “Keith Award” for producing family doctors who practice in rural areas 10 years after graduation.

True partnership

- **UPEI has much to offer to make the program innovative** and to adjust the curriculum **to suit PEI's needs.**

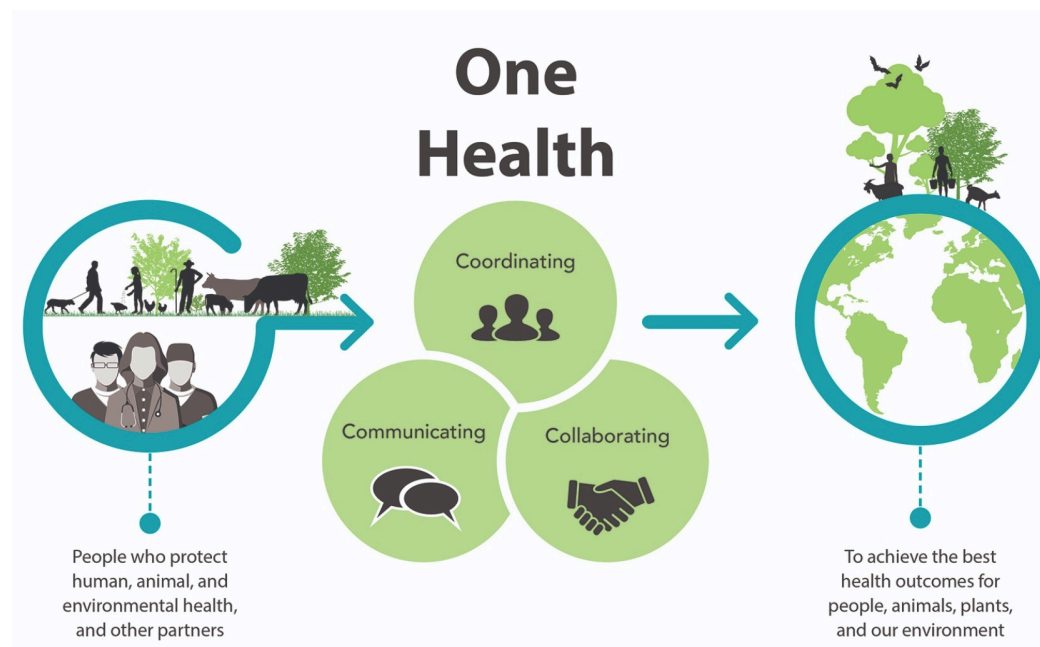


Image credit: CDC

2022 UPDATE: Progress towards a made-for-PEI Medical School



UNIVERSITY
of Prince Edward
ISLAND



From idea to vision

2019

Conducted research
in Ireland and
Canada

Engaged Dr. Tom
Marrie as medical
advisor

2020

Discussions with Memorial and Dalhousie

Engaged PEI Medical community, Ministry of Health and
Wellness; federal, provincial and municipal government
representatives; Health PEI and others

Signed MOU with Memorial University

Established Advisory Committee and Development Steering
Committee

2021

Established Finance
Discussion Groups

Established
Implementation
Steering Committee
Sub-Committees

From vision to reality

2022

- **Sixteen separate** committees of **subject experts** working on everything from curriculum to faculty development to infrastructure
- Focus on community engagement—in the **medical community** and in the broader **population**
- Working on accreditation files for both MPHEC (University) and CACMS (Medical) systems

INTEGRATING MEDICAL EDUCATION WITH PEI COMMUNITIES



UNIVERSITY
of Prince Edward
ISLAND



On the UPEI campus

- On-site UPEI Health and Wellness Centre **medical clinic**, providing services to approximately **10,000 patients from the University and broader community**, will act as a major training site for the MD program.
- **Modern medical training facility**, including state-of-the-art simulation laboratories that will benefit nursing, veterinary medicine, paramedicine, AND professionals in the community.
- MD training program including **co-location/integration of other health professionals**: nurse practitioners, psychologists, and others.

Integrating medical education on PEI

- Our vision **aligns with the model of providing health care through medical homes** where doctors work alongside allied-health colleagues.
- We're **working with Health PEI** to integrate medical education into the provincial healthcare system from tip-to-tip.
- **Hospital sites:** Examining integration of medical learners into hospital setting **across the province.**
- Beyond hospitals, we're **assessing other Health PEI sites including collaborative clinic/medical homes** to ensure learner needs are integrated.
- We need to incorporate **PEI health facilities** to make this work.

Establishing the UPEI Faculty of Medicine will

- **help stabilize** the physician supply on PEI, particularly in rural and underserved areas, resulting in reduction in waitlist; **improve health care.**
- **support** the PEI physician community by facilitating growth in numbers and enhancing current physicians' quality of life.
- **attract** PEI students to science, health-based programs who aspire to become medical doctors.
- **enhance economic activity** by attracting researchers and businesses.

LET'S HEAR
FROM YOU



UNIVERSITY
of Prince Edward
ISLAND



How would you like to see medical education be integrated into your community?



Benefitting PEI communities

How can we support youth in your community to seek careers in health care?

**What additional questions do you
have about the joint
UPEI/Memorial medical program?**

THANK YOU!

For updates on the joint UPEI-Memorial medical degree, visit
upei.ca/medicine

If you have questions or would like to feedback, email us at
medicine@upei.ca

