

KEEP UP-TO-DATE IN THE EVENT OF AN EMERGENCY

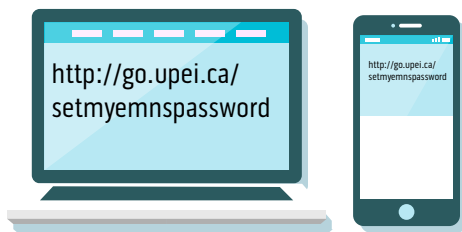
LEARN HOW WITH **UPEI EMERGENCY ALERT**

The University of Prince Edward Island takes the safety and security of its students, faculty, staff, and the entire campus community very seriously.

Currently, notifications about emergency situations or university (storm) closures are emailed to UPEI email addresses as well as posted on the front page of **upei.ca**, the UPEI campus screen network, and Twitter (@UPEI). This will not change; however, in addition, the University has launched UPEI Emergency Alert, an emergency mass notification system.

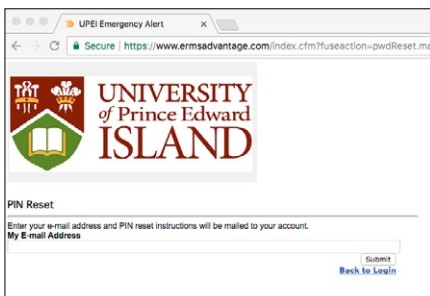
The UPEI Emergency Alert system's key feature is that it allows UPEI to send emergency and storm closure notifications by text.

TO RECEIVE NOTIFICATIONS BY TEXT, login to the UPEI Emergency Alert system to update your profile with your cell phone number:

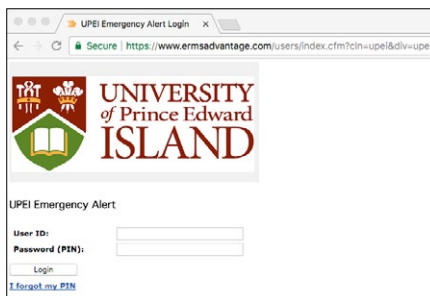


FIRST-TIME LOGIN

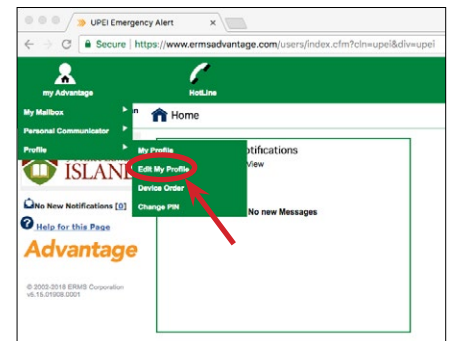
1 To login for the first time, you first must set your PIN (password) at <http://go.upei.ca/setmyemnspassword>



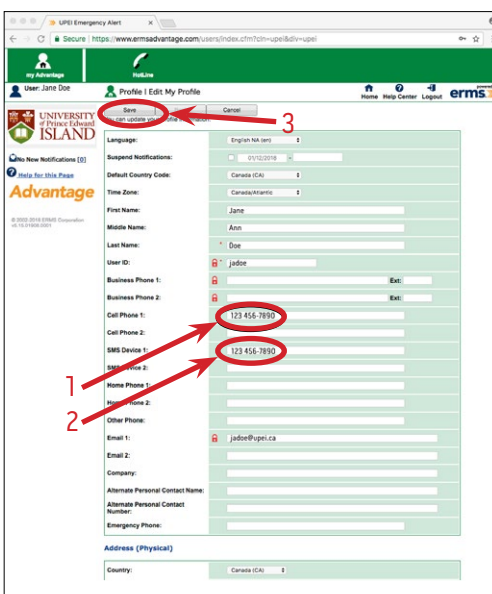
2 Once you set your PIN, to access and update your profile on UPEI Emergency Alert, login at <http://go.upei.ca/emns>



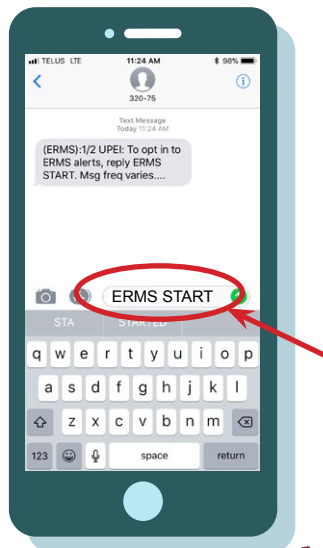
3 Under the **myAdvantage** menu in top left corner, select **"Profile"** and then **"Edit my Profile"**



4 Ensure you enter your cell phone number into both the **"Cell Number 1"** and **"SMS Device 1"** fields. **Save your changes!**

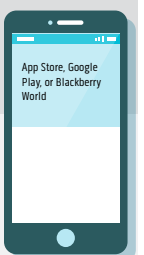


5 Send a text message from your cell phone to short code 32075 with the words **"ERMS START"**. This will activate your 'opt-in' to receive text messages.



YOU'RE DONE!

DOWNLOAD THE MOBILE APP!



You can also download the UPEI Emergency Alert mobile "app" from your operating system store to keep informed or make changes to your profile directly on your device.

1. Search the key words "ERMS Mobile" in the App Store, Google Play, or Blackberry World.
2. Follow the download instructions to load it onto your device.

UPEI's organization ID is: **UPEI**.

(Don't forget: in order to login to the mobile app, you have to complete the first-time login process described above.)