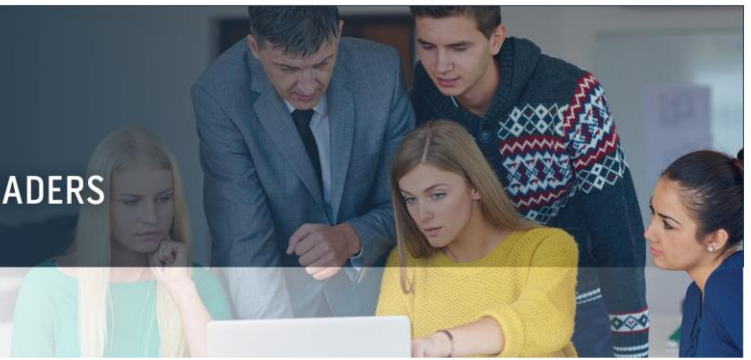


# MASTER OF EDUCATION (MEd) IN LEADERSHIP IN LEARNING

Focused for COLLEGE EDUCATORS AND LEADERS



## Program Schedule for July 2017 to July 2019: Convocation May 2020

<b>ED 615 Educational Leadership (Required)</b>	This course examines the development of college educators, leaders and aspiring leaders who can create effective educational environments. <b>*July 10 - 21, 2017 (mornings)</b>	UPEI Campus
<b>ED 614 Theories of Research and Learning (Required)</b>	This course addresses the role of theory in educational research, with a focus on theories and principles of college leadership. <b>*July 10 – 21, 2017 (afternoons)</b>	UPEI Campus
<b>ED 611 Introduction to Research Methods in Education (Required)</b>	This course introduces students to a variety of qualitative and quantitative methodologies for research in college contexts. <b>*12 Weeks, September – December, 2017</b>	Online
<b>ED 628 International Education and Development (Elective)</b>	Students end their MEd journey by examining how college education is organized and practiced in other countries, and its relationship to cultural, economic, and social development. <b>*12 Weeks, January – April, 2018</b>	Online
<b>ED 629 Program Evaluation (Elective)</b>	This course examines various concepts and issues to understand the tools and knowledge necessary for conducting an evaluation assessment in a college context. <b>*Six Weeks, April - June, 2018</b>	Online
<b>ED 619 Critical Pedagogy (Required)</b>	Students begin their MEd journey by examining processes of reflective practice such as analytic problem-solving and self-assessment in college leadership. <b>*Half days over two weeks, July 2018</b>	UPEI Campus
<b>ED 624 Change: Leadership in Learning (Elective)</b>	This course examines research on models of innovation and change that have had an impact on college education over the last thirty years. <b>*Half days over two weeks, July 2018</b>	UPEI Campus
<b>ED 616 Action Research in Education (Required)</b>	This course explores research topic selection, methodology, data collection and analysis, and interpretation of results directed toward reflective practices in college contexts. <b>*12 Weeks, September – December, 2018</b>	Online
<b>ED 625 Curriculum: Leadership in Learning (Required)</b>	This course examines research into recent curriculum developments in order to develop leadership skills for college curriculum change. <b>*12 Weeks, January – April, 2019</b>	Online
<b>ED 617 Issues in Educational Leadership (Required)</b>	This course examines current issues in college educational leadership. <b>*One Week, July 2019</b>	UPEI Campus